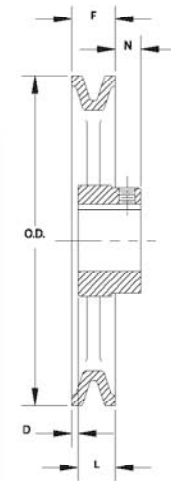


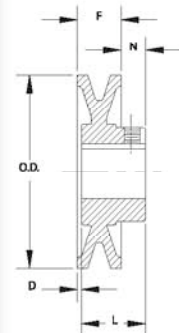
Single Groove Bored to Size for A, 3L or 4L Light Duty V Belts

PART#	O.D.	TYPE	STOCK BORES	F	L	N	D	WGT.
AK17	1.75	1	1/2, 5/8	21/32	15/16	7/16	5/32	.2
AK20	2.00	1	3/8, 1/2, 5/8, 3/4	21/32	15/16	7/16	5/32	.3
AK21	2.10	1	1/2, 5/8, 3/4	21/32	15/16	7/16	5/32	.4
AK22	2.20	1	1/2, 5/8, 3/4	21/32	15/16	7/16	5/32	.5
AK23	2.30	1	1/2, 5/8, 3/4, 7/8	21/32	15/16	7/16	5/32	.5
AK25	2.50	2	1/2, 5/8, 3/4, 7/8, 1	21/32	15/16	7/16	5/32	.5
AK26	2.60	2	1/2, 5/8, 3/4	21/32	15/16	7/16	5/32	.5
AK27	2.70	2	1/2, 5/8, 3/4	21/32	15/16	7/16	5/32	.6
AK28	2.80	2	1/2, 5/8, 3/4, 7/8, 1	21/32	15/16	7/16	5/32	.7
AK30	3.05	2	1/2, 5/8, 3/4, 7/8, 1	21/32	15/16	7/16	5/32	.7
AK32	3.25	2	1/2, 5/8, 3/4, 7/8, 1	21/32	15/16	7/16	5/32	.7
AK34	3.45	2	1/2, 5/8, 3/4, 7/8, 1	21/32	15/16	7/16	5/32	.9
AK39	3.75	2	1/2, 5/8, 3/4, 7/8, 15/16, 1, 1-1/8	3/4	1-5/32	15/32	1/16	1.4
AK41	3.95	2	1/2, 5/8, 3/4, 7/8, 15/16, 1	3/4	1-5/32	15/32	1/16	1.5
AK44	4.25	3	1/2, 5/8, 3/4, 7/8, 15/16, 1, 1-1/8	3/4	1-5/32	15/32	1/16	1.5
AK46	4.45	3	1/2, 5/8, 3/4, 7/8, 15/16, 1, 1-1/8	3/4	1-5/32	15/32	1/16	1.5
AK49	4.75	3	1/2, 5/8, 3/4, 7/8, 15/16, 1, 1-1/8	3/4	1-5/32	15/32	1/16	1.7
AK51	4.95	3	1/2, 5/8, 3/4, 7/8, 1, 1-1/8	3/4	1-5/32	15/32	1/16	1.7
AK52	5.05	3	1/2, 5/8, 3/4, 7/8, 15/16, 1, 1-1/8	3/4	1-5/32	15/32	1/16	1.7
AK54	5.25	3	1/2, 5/8, 3/4, 7/8, 15/16, 1, 1-1/8, 1-3/16	3/4	1-5/32	15/32	1/16	1.8
AK56	5.45	3	1/2, 5/8, 3/4, 7/8, 15/16, 1, 1-1/8, 1-3/16	3/4	1-5/32	15/32	1/16	1.9
AK59	5.75	3	1/2, 5/8, 3/4, 7/8, 15/16, 1, 1-1/8, 1-3/16	3/4	1-5/32	15/32	1/16	2.0
AK61	5.95	3	1/2, 5/8, 3/4, 7/8, 15/16, 1, 1-1/8, 1-3/16	3/4	1-5/32	15/32	1/16	2.1
AK64	6.25	3	1/2, 5/8, 3/4, 7/8, 15/16, 1, 1-1/8, 1-3/16	3/4	1-5/32	15/32	1/16	2.2
AK66	6.45	3	5/8, 3/4, 1, 1-1/8	3/4	1-5/32	15/32	1/16	2.5
AK69	6.75	3	3/4, 1, 1-1/8	3/4	1-15/32	23/32	0	3.5
AK71	6.95	3	5/8, 3/4, 1, 1-1/8, 1-7/16	3/4	1-15/32	23/32	0	3.8
AK74	7.25	3	1/2, 5/8, 3/4, 7/8, 15/16, 1, 1-1/8, 1-3/16, 1-1/4, 1-7/16	3/4	1-15/32	23/32	0	3.4
AK79	7.75	3	3/4, 1, 1-1/8, 1-7/16	3/4	1-15/32	23/32	0	4.0
AK84	8.25	3	1/2, 5/8, 3/4, 15/16, 1, 1-3/16, 1-7/16	3/4	1-15/32	23/32	0	3.8
AK89	8.75	3	3/4, 1, 1-1/8, 1-7/16	3/4	1-15/32	23/32	0	4.3
AK94	9.25	3	1/2, 5/8, 3/4, 15/16, 1, 1-3/16, 1-1/4, 1-7/16	3/4	1-15/32	23/32	0	4.5
AK99	9.75	3	3/4, 1, 1-1/4, 1-7/16	3/4	1-15/32	23/32	0	5.3
AK104	10.25	3	5/8, 3/4, 1, 1-3/16, 1-1/4, 1-3/8, 1-7/16	3/4	1-15/32	23/32	0	5.1
AK109	10.75	3	3/4, 1, 1-3/8, 1-7/16	3/4	1-15/32	23/32	0	5.8
AK114	11.25	3	3/4, 1, 1-3/16, 1-7/16	3/4	1-15/32	23/32	0	5.6
AK124	12.25	3	5/8, 3/4, 1, 1-3/16, 1-1/4, 1-7/16	3/4	1-15/32	23/32	0	6.5
AK134	13.25	3	3/4, 1, 1-3/16, 1-3/8, 1-7/16	3/4	1-15/32	23/32	0	7.5
AK144	14.25	3	3/4, 1, 1-3/16, 1-7/16	3/4	1-15/32	23/32	0	8.5
AK154	15.25	3	3/4, 1, 1-3/16, 1-3/8, 1-7/16	3/4	1-15/32	23/32	0	9.8
AK184	18.25	3	3/4, 1, 1-3/16, 1-7/16	3/4	1-15/32	23/32	0	12.1

Pulleys are cast iron with a black oxide finish and 1 setscrew.



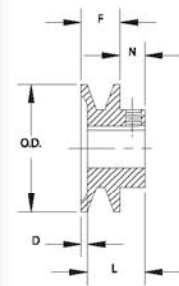
TYPE 3



TYPE 2



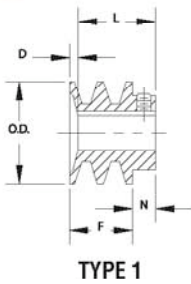
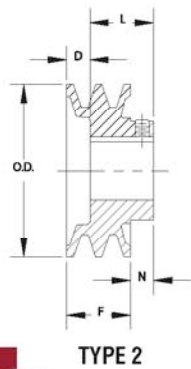
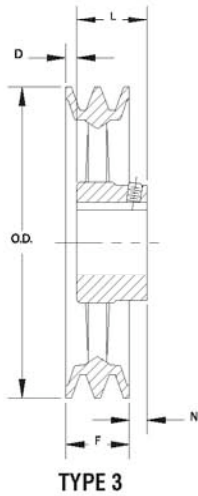
PULLEYS



TYPE 1

Refer to the Moline List Price Book for pricing.

2AK - LIGHT DUTY PULLEYS



Double Groove Bored to Size for A, 3L or 4L Light Duty V Belts

PART#	O.D.	TYPE	STOCK BORES	F	L	N	D	WGT.
2AK20	2.00	1	1/2, 5/8, 3/4, 7/8	1-3/8	1-21/32	15/32	3/16	.8
2AK21	2.15	1	1/2, 5/8, 3/4	1-3/8	1-21/32	15/32	3/16	.9
2AK22	2.25	1	1/2, 5/8, 3/4, 7/8	1-3/8	1-21/32	15/32	3/16	.9
2AK23	2.35	1	5/8, 3/4, 7/8, 1	1-3/8	1-21/32	15/32	3/16	1.1
2AK25	2.55	1	5/8, 3/4, 7/8, 1	1-3/8	1-21/32	15/32	3/16	1.3
2AK26	2.65	1	5/8, 3/4, 7/8, 1	1-3/8	1-21/32	15/32	3/16	1.4
2AK27	2.75	1	5/8, 3/4, 7/8, 1	1-3/8	1-21/32	15/32	3/16	1.5
2AK28	2.85	1	5/8, 3/4, 7/8, 1	1-3/8	1-21/32	15/32	3/16	1.8
2AK30	3.05	1	1/2, 5/8, 3/4, 7/8, 1, 1-1/8	1-3/8	1-21/32	15/32	3/16	1.8
2AK32	3.25	1	1/2, 5/8, 3/4, 7/8, 1, 1-1/8	1-3/8	1-21/32	15/32	3/16	2.1
2AK33	3.35	1	5/8	1-3/8	1-21/32	15/32	3/16	2.2
2AK34	3.45	1	1/2, 5/8, 3/4, 7/8, 1, 1-1/8	1-3/8	1-21/32	15/32	3/16	2.3
2AK39	3.75	2	1/2, 5/8, 3/4, 7/8, 1, 1-1/8	1-3/8	1-11/32	15/32	1/2	2.6
2AK41	3.95	2	5/8, 3/4, 7/8, 1, 1-1/8	1-3/8	1-11/32	15/32	1/2	2.9
2AK44	4.25	2	5/8, 3/4, 7/8, 1, 1-1/8	1-3/8	1-11/32	15/32	1/2	3.0
2AK46	4.45	2	7/8, 1, 1-1/8	1-3/8	1-11/32	15/32	1/2	3.1
2AK49	4.75	2	3/4, 7/8, 1, 1-1/8, 1-3/8	1-3/8	1-11/32	15/32	1/2	3.6
2AK51	4.95	2	3/4, 7/8, 1, 1-1/8, 1-3/8	1-3/8	1-11/32	15/32	1/2	3.8
2AK54	5.25	3	5/8, 3/4, 7/8, 1, 1-1/8, 1-3/8	1-3/8	1-11/32	15/32	1/2	3.3
2AK56	5.45	3	5/8, 3/4, 1, 1-1/8, 1-3/8	1-3/8	1-11/32	15/32	1/2	3.4
2AK59	5.75	3	1, 1-1/8, 1-3/8	1-3/8	1-11/32	15/32	1/2	3.5
2AK61	5.95	3	3/4, 7/8, 1, 1-1/8, 1-3/8	1-3/8	1-11/32	15/32	1/2	3.6
2AK64	6.25	3	3/4, 1, 1-1/8, 1-3/16, 1, 1-3/8, 1-7/16	1-3/8	1-19/32	11/32	1/8	4.8
2AK74	7.25	3	3/4, 1, 1-1/8, 1-3/16, 1, 1-3/8, 1-7/16	1-3/8	1-19/32	11/32	1/8	5.6
2AK84	8.25	3	3/4, 15/16, 1, 1-1/8, 1-3/16, 1-3/8, 1-7/16	1-3/8	1-19/32	11/32	1/8	6.4
2AK94	9.25	3	3/4, 15/16, 1, 1-1/8, 1-3/16, 1-3/8, 1-7/16	1-3/8	1-19/32	11/32	1/8	7.3
2AK104	10.25	3	3/4, 15/16, 1, 1-3/16, 1-3/8, 1-7/16	1-3/8	1-19/32	11/32	1/8	8.1
2AK114	11.25	3	3/4, 1, 1-3/16, 1-3/8, 1-7/16	1-3/8	1-19/32	11/32	1/8	9.0
2AK124	12.25	3	3/4, 1, 1-3/16, 1-7/16	1-3/8	1-19/32	11/32	1/8	9.8
2AK134	13.25	3	1-3/16, 1-7/16	1-3/8	1-19/32	11/32	1/8	12.3
2AK144	14.25	3	1, 1-7/16	1-3/8	1-19/32	11/32	1/8	13.9
2AK154	15.25	3	1-3/16, 1-7/16	1-3/8	1-19/32	11/32	1/8	14.3
2AK184	18.25	3	1-3/16, 1-7/16	1-3/8	1-19/32	11/32	1/8	17.4

Pulleys are cast iron with a black oxide finish and 1 setscrew.

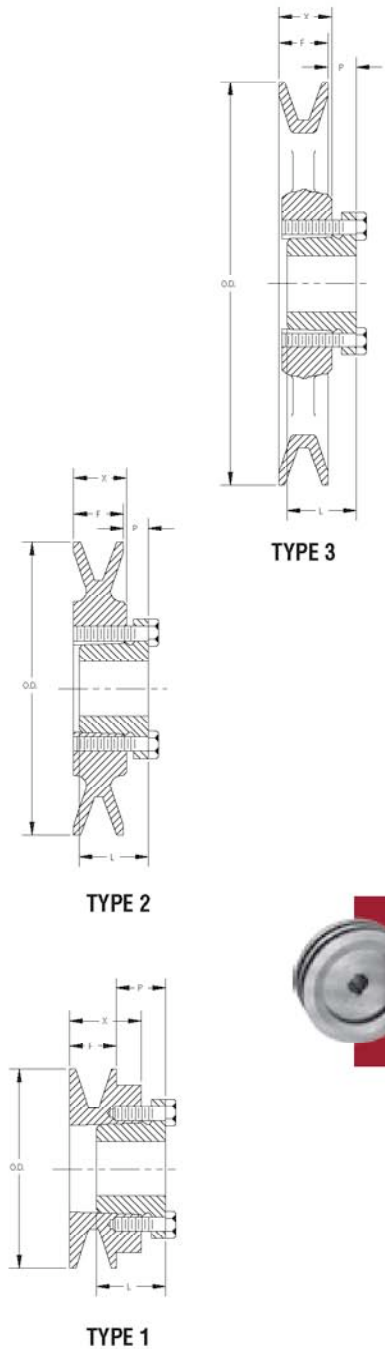
Refer to the Moline List Price Book for pricing.

Call 630-584-4600 or 800-242-4633 Fax 630-584-1999 www.molinebearing.com sales@molinebearing.com
Moline Bearing Company P.O. Box 509 St. Charles, IL 60174

Single Groove Bushed for A, 3L OR 4L Light Duty V Belts

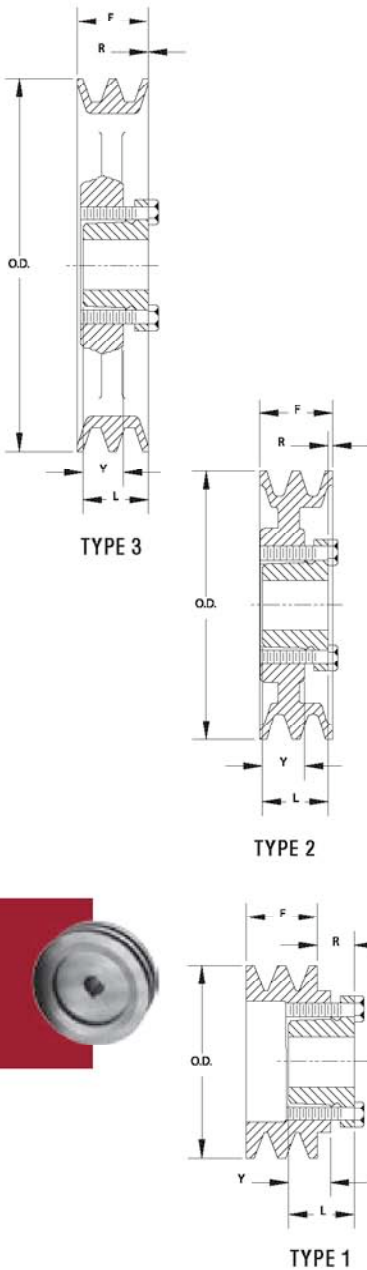
PART#	O.D.	TYPE	F	L	P	X	WGT.
AK30D	3.05	1	3/4	1-1/4	7/8	1-3/16	1.1
AK32D	3.25	1	3/4	1-1/4	7/8	1-3/16	1.2
AK34D	3.45	2	3/4	1-1/4	9/16	7/8	1.0
AK39D	3.75	2	3/4	1-1/4	9/16	7/8	1.4
AK41D	3.95	2	3/4	1-1/4	9/16	7/8	1.6
AK44D	4.25	2	3/4	1-1/4	9/16	7/8	1.9
AK46D	4.45	2	3/4	1-1/4	9/16	7/8	1.9
AK49D	4.75	2	3/4	1-1/4	9/16	7/8	2.1
AK51D	4.95	2	3/4	1-1/4	9/16	7/8	2.3
AK54D	5.25	2	3/4	1-1/4	9/16	7/8	2.0
AK56D	5.45	2	3/4	1-1/4	9/16	7/8	2.3
AK59D	5.75	2	3/4	1-1/4	9/16	7/8	2.4
AK61D	5.95	3	3/4	1-1/4	9/16	7/8	2.5
AK64D	6.25	3	3/4	1-1/4	9/16	7/8	2.7
AK66D	6.45	3	3/4	1-1/4	9/16	7/8	2.8
AK69D	6.75	3	3/4	1-1/4	9/16	7/8	3.2
AK71D	6.95	3	3/4	1-1/4	9/16	7/8	3.1
AK74D	7.25	3	3/4	1-1/4	9/16	7/8	3.3
AK79D	7.75	3	3/4	1-1/4	9/16	7/8	3.5
AK84D	8.25	3	3/4	1-1/4	9/16	7/8	3.6
AK89D	8.75	3	3/4	1-1/4	9/16	7/8	4.0
AK94D	9.25	3	3/4	1-1/4	9/16	7/8	4.4
AK99D	9.75	3	3/4	1-1/4	9/16	7/8	4.7
AK100D	10.00	3	3/4	1-1/4	9/16	7/8	4.6
AK104D	10.25	3	3/4	1-1/4	9/16	7/8	4.5
AK109D	10.75	3	3/4	1-1/4	9/16	7/8	5.1
AK114D	11.25	3	3/4	1-1/4	9/16	7/8	5.5
AK124D	12.25	3	3/4	1-1/4	9/16	7/8	6.1
AK134D	13.25	3	3/4	1-1/4	9/16	7/8	7.4
AK144D	14.25	3	3/4	1-1/4	9/16	7/8	7.8
AK154D	15.25	3	3/4	1-1/4	9/16	7/8	8.8
AK184D	18.25	3	3/4	1-1/4	9/16	7/8	11.3

Pulleys are cast iron with a black oxide finish and 1 setscrew.
Refer to page 79 for appropriate D Bushing.



Refer to the Moline List Price Book for pricing.

2AKD - LIGHT DUTY PULLEYS



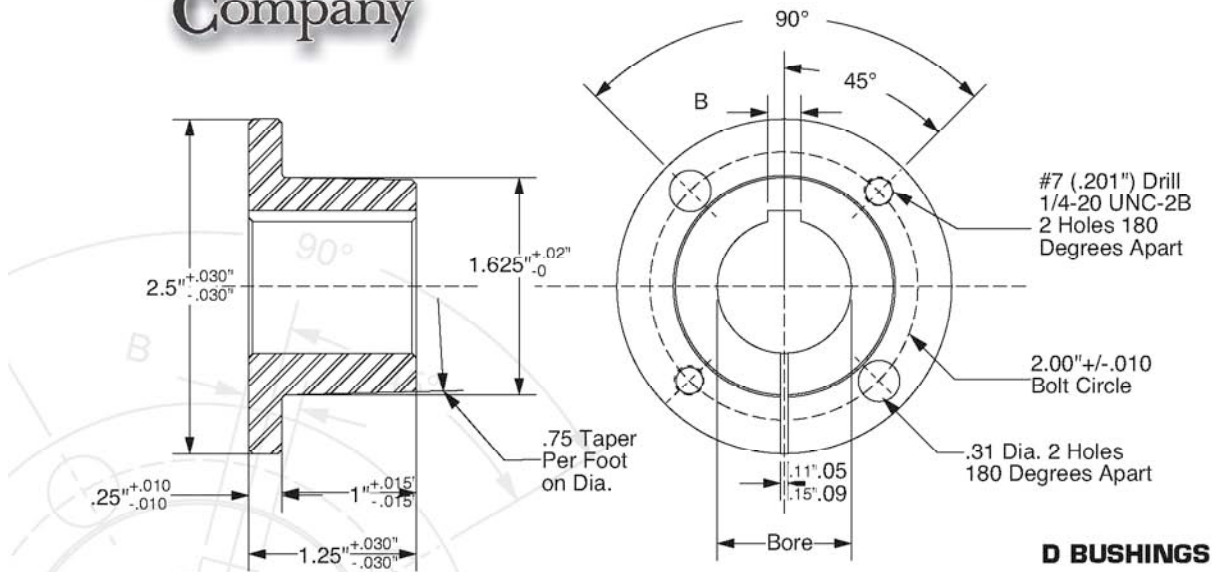
Double Groove Bushed for A, 3L or 4L Light Duty V Belts

PART#	O.D.	TYPE	F	L	R	Y	WGT.
2AK30D	3.05	1	1-3/8	1-1/4	7/8	7/8	1.4
2AK32D	3.25	1	1-3/8	1-1/4	7/8	7/8	1.7
2AK34D	3.45	1	1-3/8	1-1/4	7/16	7/8	1.8
2AK39D	3.75	1	1-3/8	1-1/4	7/16	7/8	1.8
2AK41D	3.95	2	1-3/8	1-1/4	1/16	7/8	1.8
2AK44D	4.25	2	1-3/8	1-1/4	1/16	7/8	2.4
2AK46D	4.45	2	1-3/8	1-1/4	1/16	7/8	2.5
2AK49D	4.75	2	1-3/8	1-1/4	1/16	7/8	3.1
2AK51D	4.95	2	1-3/8	1-1/4	1/16	7/8	3.2
2AK54D	5.25	2	1-3/8	1-1/4	1/16	7/8	3.4
2AK56D	5.45	2	1-3/8	1-1/4	1/16	7/8	3.6
2AK59D	5.75	3	1-3/8	1-1/4	1/16	7/8	3.4
2AK61D	5.95	3	1-3/8	1-1/4	1/16	7/8	3.3
2AK64D	6.25	3	1-3/8	1-1/4	1/16	7/8	3.9
2AK74D	7.25	3	1-3/8	1-1/4	1/16	7/8	4.9
2AK80D	7.90	3	1-3/8	1-1/7	1/16	7/8	5.4
2AK84D	8.25	3	1-3/8	1-1/4	1/16	7/8	5.8
2AK94D	9.25	3	1-3/8	1-1/4	1/16	7/8	6.1
2AK104D	10.25	3	1-3/8	1-1/4	1/16	7/8	7.7
2AK114D	11.25	3	1-3/8	1-1/4	1/16	7/8	8.5
2AK124D	12.25	3	1-3/8	1-1/4	1/16	7/8	9.5
2AK134D	13.25	3	1-3/8	1-1/4	1/16	7/8	11.4
2AK144D	14.25	3	1-3/8	1-1/4	1/16	7/8	11.9
2AK154D	15.25	3	1-3/8	1-1/4	1/16	7/8	13.3
2AK184D	18.25	3	1-3/8	1-1/4	1/16	7/8	16.8

Pulleys are cast iron with a black oxide finish and 1 setscrew.
Refer to page 79 for appropriate D Bushing.

Refer to the Moline List Price Book for pricing.

Call 630-584-4600 or 800-242-4633 Fax 630-584-1999 www.molinebearing.com sales@molinebearing.com
Moline Bearing Company P.O. Box 509 St. Charles, IL 60174



D BUSHINGS

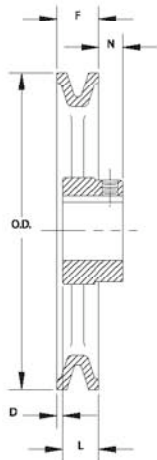
Stock Bore (inches)	Part #	Keyseat
1/2	D1/2	1/8X1/16
5/8	D5/8	3/16X3/32
3/4	D3/4	3/16X3/32
7/8	D7/8	3/16X3/32
15/16	D15/16	1/4X1/8
1	D1	1/4X1/8
1-1/8	D1-1/8	1/4X1/8
1-3/16	D1-3/16	1/4X1/8
1-1/4	D1-1/4	1/4X1/8
1-5/16	D1-5/16	5/16X1/16*
1-3/8	D1-3/8	5/16X1/16*
1-7/16	D1-7/16	3/8X1/16*
1-1/2	D1-1/2	3/8X1/16*

* Denotes shallow key, keystock is included.
 Note: D bushings are comparable to H bushings made by other manufacturers.

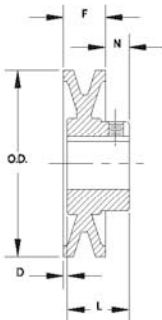
Refer to the Moline List Price Book for pricing.



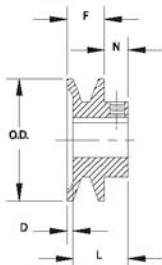
BK - LIGHT DUTY PULLEYS



TYPE 3



TYPE 2



TYPE 1

Single Groove Bored to Size for 4L or A and 5L or B Light Duty V Belts

PART#	O.D.	TYPE	STOCK BORES	F	L	N	D	WGT.
BK20	2.00	1	1/2	13/16	1-1/16	13/32	5/32	.4
BK24	2.40	1	1/2, 5/8, 3/4	13/16	1-1/16	13/32	5/32	.4
BK25	2.50	1	1/2, 5/8, 3/4, 7/8, 1	13/16	1-1/16	13/32	5/32	.5
BK26	2.60	1	1/2, 5/8, 3/4, 7/8	13/16	1-1/16	13/32	5/32	.6
BK27	2.70	2	1/2, 5/8, 3/4, 7/8, 1	13/16	1-1/16	13/32	5/32	.6
BK28	2.80	2	1/2, 5/8, 3/4, 7/8, 1, 1-1/8	13/16	1-1/16	13/32	5/32	.8
BK30	3.15	2	1/2, 5/8, 3/4, 7/8, 1	13/16	1-1/16	13/32	5/32	.8
BK32	3.35	2	1/2, 5/8, 3/4, 7/8	13/16	1-1/16	13/32	5/32	.8
BK34	3.55	2	1/2, 5/8, 3/4, 7/8, 1, 1-1/8	7/8	1-1/16	13/32	1/8	1.3
BK36	3.75	2	1/2, 5/8, 3/4, 7/8, 1, 1-1/8	7/8	1-5/32	13/32	1/8	1.5
BK40	3.95	2	1/2, 5/8, 3/4, 7/8, 1, 1-1/8	7/8	1-5/32	13/32	1/8	1.5
BK45	4.25	2	1/2, 5/8, 3/4, 7/8, 1, 1-1/8	7/8	1-5/32	13/32	1/8	1.8
BK47	4.45	2	1/2, 5/8, 3/4, 7/8, 1, 1-1/8	7/8	1-5/32	13/32	1/8	1.9
BK50	4.75	3	1/2, 5/8, 3/4, 7/8, 1, 1-1/8	7/8	1-5/32	13/32	1/8	2.0
BK52	4.95	3	1/2, 5/8, 3/4, 7/8, 1, 1-1/8	7/8	1-5/32	13/32	1/8	2.0
BK55	5.25	3	1/2, 5/8, 3/4, 7/8, 15/16, 1, 1-1/8, 1-3/16	7/8	1-5/32	13/32	1/8	2.2
BK57	5.45	3	5/8, 3/4, 7/8, 15/16, 1, 1-1/8	7/8	1-5/32	13/32	1/8	2.3
BK60	5.75	3	1/2, 5/8, 3/4, 7/8, 1, 1-1/8, 1-3/16	7/8	1-5/32	13/32	1/8	2.3
BK62	5.95	3	1/2, 5/8, 3/4, 7/8, 15/16, 1, 1-1/8, 1-3/16	7/8	1-5/32	13/32	1/8	2.4
BK65	6.25	3	5/8, 3/4, 1, 1-1/8	7/8	1-5/32	13/32	1/8	2.7
BK67	6.45	3	5/8, 3/4, 1, 1-1/8	7/8	1-15/32	13/32	1/8	2.8
BK70	6.75	3	5/8, 3/4, 15/16, 1, 1-1/8, 1-3/16, 1-7/16	7/8	1-15/32	21/32	1/16	3.3
BK72	6.95	3	3/4, 1, 1-1/8, 1-3/8	7/8	1-15/32	21/32	1/16	3.9
BK75	7.25	3	3/4, 1, 1-1/8, 1-3/8	7/8	1-15/32	21/32	1/16	3.9
BK77	7.45	3	3/4, 1, 1-1/8, 1-3/8	7/8	1-15/32	21/32	1/16	4.1
BK80	7.75	3	5/8, 3/4, 7/8, 1, 1-1/8, 1-3/16, 1-1/4, 1-3/8, 1-7/16	7/8	1-15/32	21/32	1/16	4.4
BK85	8.25	3	3/4, 1, 1-1/8, 1-3/8, 1-7/16	7/8	1-15/32	21/32	1/16	5.0
BK90	8.75	3	5/8, 3/4, 7/8, 15/16, 1, 1-1/8, 1-3/16, 1-1/4, 1-3/8, 1-7/16	7/8	1-15/32	21/32	1/16	5.0
BK95	9.25	3	3/4, 1, 1-1/8, 1-3/8, 1-3/16, 1-1/4	7/8	1-15/32	21/32	1/16	5.4
BK100	9.75	3	3/4, 7/8, 15/16, 1, 1-1/8, 1-3/16, 1-1/4, 1-3/8, 1-7/16	7/8	1-15/32	21/32	1/16	5.6
BK105	10.25	3	1, 1-3/8, 1-7/16	7/8	1-15/32	21/32	1/16	5.8
BK110	10.75	3	3/4, 1, 1-1/8, 1-3/16, 1-3/8, 1-7/16	7/8	1-15/32	21/32	1/16	6.4
BK115	11.25	3	1, 1-7/16	7/8	1-15/32	21/32	1/16	6.9
BK120	11.75	3	3/4, 1, 1-3/16, 1-7/16	7/8	1-15/32	21/32	1/16	7.4
BK130	12.75	3	3/4, 1, 1-1/8, 1-3/16, 1-1/4, 1-7/16	7/8	1-15/32	21/32	1/16	8.4
BK140	13.75	3	3/4, 1, 1-3/16, 1-7/16	7/8	1-15/32	21/32	1/16	9.4
BK160	15.75	3	1, 1-1/8, 1-3/16, 1-1/4, 1-7/16	7/8	1-15/32	21/32	1/16	11.4
BK190	18.75	3	1, 1-3/16, 1-1/4, 1-7/16	7/8	1-15/32	21/32	1/16	13.4

Pulleys are cast iron with a black oxide finish and 1 setscrew.

Refer to the Moline List Price Book for pricing.

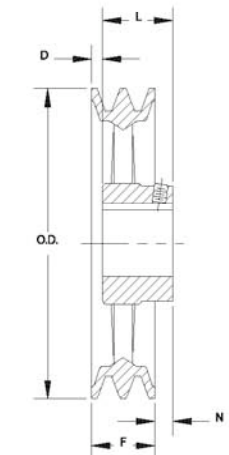
Call 630-584-4600 or 800-242-4633 Fax 630-584-1999 www.molinebearing.com sales@molinebearing.com
Moline Bearing Company P.O. Box 509 St. Charles, IL 60174

**Double Groove Bored to Size A-B Combination
for 4L or 5L Light Duty V Belts**

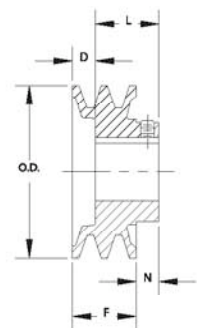
PART#	O.D.	TYPE	STOCK BORES	F	L	N	D	WGT.
2BK25	2.50	1	1/2, 5/8, 3/4, 7/8	1-3/4	1-31/32	15/32	1/4	1.3
2BK27	2.70	1	1/2, 5/8, 3/4, 7/8, 1, 1-1/8	1-3/4	1-31/32	15/32	1/4	1.6
2BK28	2.80	1	1/2, 5/8, 3/4, 7/8, 1, 1-1/8	1-3/4	1-31/32	15/32	1/4	1.9
2BK30	3.15	1	1/2, 5/8, 3/4, 7/8, 1, 1-1/8	1-3/4	1-31/32	15/32	1/4	2.3
2BK32	3.35	1	5/8, 3/4, 7/8, 1, 1-1/8	1-3/4	1-31/32	15/32	1/4	2.6
2BK34	3.55	1	5/8, 3/4, 7/8, 1, 1-1/8	1-3/4	1-31/32	15/32	1/4	2.8
2BK36	3.75	1	5/8, 3/4, 7/8, 1, 1-1/8, 1-3/8	1-3/4	1-31/32	15/32	1/4	3.3
2BK40	3.95	1	5/8, 3/4, 7/8, 1, 1-1/8	1-3/4	1-15/32	15/32	3/4	3.3
2BK45	4.25	2	1, 1-1/8, 1-3/8	1-3/4	1-15/32	15/32	3/4	3.3
2BK47	4.45	2	7/8, 1, 1-1/8	1-3/4	1-15/32	15/32	3/4	3.7
2BK50	4.75	2	3/4, 1, 1-1/8, 1-3/16, 1-3/8	1-3/4	1-15/32	15/32	3/4	4.1
2BK52	4.95	2	5/8, 3/4, 7/8, 1, 1-1/8, 1-3/16, 1-3/8	1-3/4	1-15/32	15/32	3/4	4.5
2BK55	5.25	2	3/4, 1, 1-1/8, 1-3/8	1-3/4	1-15/32	15/32	3/4	4.5
2BK57	5.45	2	1, 1-1/8, 1-3/8	1-3/4	1-15/32	15/32	3/4	5.1
2BK60	5.75	3	3/4, 7/8, 1, 1-1/8, 1-3/8	1-3/4	1-15/32	15/32	3/4	4.9
2BK62	5.95	3	1, 1-1/8	1-3/4	1-15/32	15/32	3/4	4.8
2BK65	6.25	3	1, 1-1/8, 1-3/8	1-3/4	1-15/32	15/32	3/4	5.0
2BK67	6.45	3	1, 1-1/8, 1-3/8	1-3/4	1-15/32	15/32	3/4	5.0
2BK70	6.75	3	3/4, 1, 1-1/8, 1-3/16, 1-3/8, 1-7/16	1-3/4	1-19/32	11/32	3/4	6.6
2BK80	7.75	3	3/4, 1, 1-1/8, 1-3/16, 1-3/8, 1-7/16	1-3/4	1-19/32	11/32	1/2	7.2
2BK90	8.75	3	3/4, 1, 1-1/8, 1-3/16, 1-3/8, 1-7/16	1-3/4	1-19/32	11/32	1/2	8.4
2BK100	9.75	3	3/4, 1, 1-3/16, 1-3/8, 1-7/16	1-3/4	1-19/32	11/32	1/2	9.4
2BK110	10.75	3	1, 1-3/16, 1-7/16	1-3/4	1-19/32	11/32	1/2	10.4
2BK120	11.75	3	1, 1-3/16, 1-7/16	1-3/4	1-19/32	11/32	1/2	11.8
2BK130	12.75	3	1, 1-3/16, 1-7/16	1-3/4	1-19/32	11/32	1/2	14.9
2BK140	13.75	3	1, 1-3/16, 1-7/16	1-3/4	1-19/32	11/32	1/2	16.3
2BK160	15.75	3	1, 1-3/16, 1-7/16	1-3/4	1-19/32	11/32	1/2	18.0
2BK190	18.75	3	1-3/16, 1-7/16	1-3/4	1-19/32	11/32	1/2	23.3

Pulleys are cast iron with a black oxide finish and 1 setscrew.

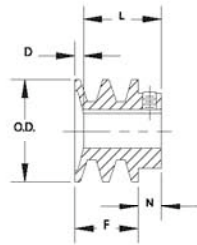
Refer to the Moline List Price Book for pricing.



TYPE 3

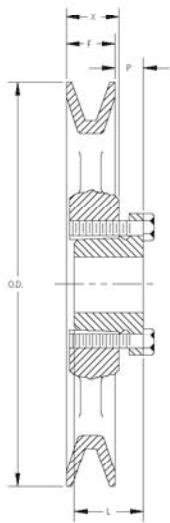


TYPE 2

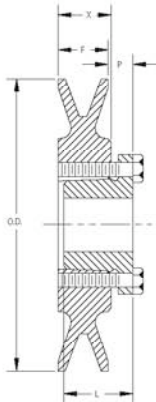


TYPE 1

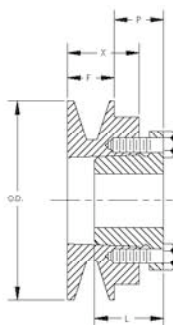
BKD - LIGHT DUTY PULLEYS



TYPE 3



TYPE 2



TYPE 1

Single Groove Bushed for 4L or A, and 5L or B Light Duty V Belts

PART#	O.D.	TYPE	F	L	P	X	WGT.
BK30D	3.15	1	7/8	1-1/4	7/8	1-5/16	.8
BK32D	3.35	1	7/8	1-1/4	7/8	1-5/16	.8
BK34D	3.55	1	7/8	1-1/4	7/8	1-5/16	1.3
BK36D	3.75	2	7/8	1-1/4	7/16	7/8	1.5
BK40D	3.95	2	7/8	1-1/4	7/16	7/8	1.5
BK45D	4.25	2	7/8	1-1/4	7/16	7/8	1.8
BK47D	4.45	2	7/8	1-1/4	7/16	7/8	1.9
BK50D	4.75	2	7/8	1-1/4	7/16	7/8	2.0
BK52D	4.95	2	7/8	1-1/4	7/16	7/8	2.0
BK55D	5.25	2	7/8	1-1/4	7/16	7/8	2.2
BK57D	5.45	2	7/8	1-1/4	7/16	7/8	2.3
BK60D	5.75	2	7/8	1-1/4	7/16	7/8	2.3
BK62D	5.95	2	7/8	1-1/4	7/16	7/8	2.4
BK65D	6.25	2	7/8	1-1/4	7/16	7/8	2.7
BK67D	6.45	2	7/8	1-1/4	7/16	7/8	2.8
BK70D	6.75	3	7/8	1-1/4	1/2	7/8	3.3
BK72D	6.95	3	7/8	1-1/4	1/2	7/8	3.9
BK75D	7.25	3	7/8	1-1/4	1/2	7/8	3.9
BK77D	7.45	3	7/8	1-1/4	1/2	7/8	4.1
BK80D	7.75	3	7/8	1-1/4	1/2	7/8	4.4
BK85D	8.25	3	7/8	1-1/4	1/2	7/8	5.0
BK90D	8.75	3	7/8	1-1/4	1/2	7/8	5.0
BK95D	9.25	3	7/8	1-1/4	1/2	7/8	5.4
BK100D	9.75	3	7/8	1-1/4	1/2	7/8	5.6
BK105D	10.25	3	7/8	1-1/4	1/2	7/8	5.8
BK110D	10.75	3	7/8	1-1/4	1/2	7/8	6.4
BK115D	11.25	3	7/8	1-1/4	1/2	7/8	6.9
BK120D	11.75	3	7/8	1-1/4	1/2	7/8	7.4
BK130D	12.75	3	7/8	1-1/4	1/2	7/8	8.4
BK140D	13.75	3	7/8	1-1/4	1/2	7/8	9.4
BK150D	13.75	3	7/8	1-1/4	1/2	7/8	12.3
BK160D	15.75	3	7/8	1-1/4	1/2	7/8	11.4
BK190D	18.75	3	7/8	1-1/4	1/2	7/8	13.4

Pulleys are cast iron with a black oxide finish and 1 setscrew.
 Refer to page 79 for appropriate D Bushing.

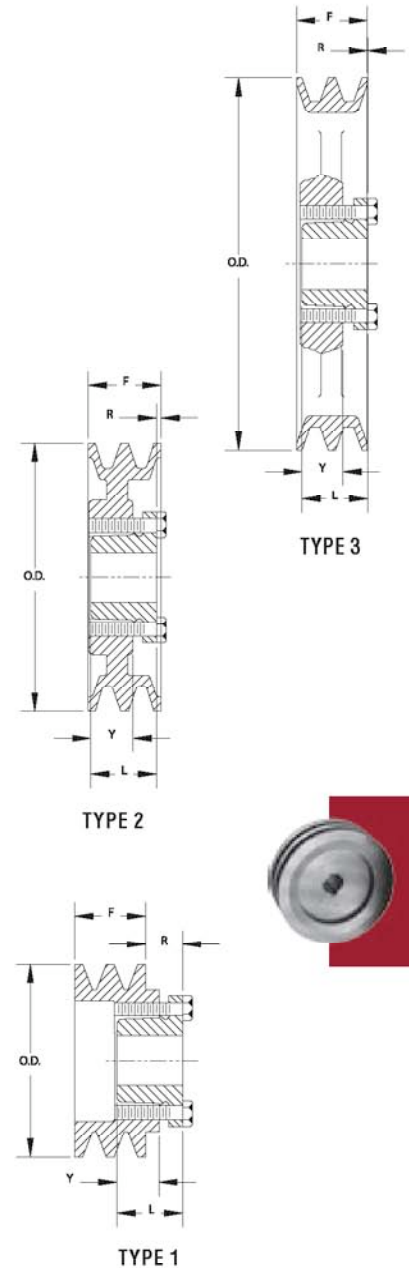
Refer to the Moline List Price Book for pricing.

Call 630-584-4600 or 800-242-4633 Fax 630-584-1999 www.molinebearing.com sales@molinebearing.com
 Moline Bearing Company P.O. Box 509 St. Charles, IL 60174

Double Groove Bushed for 4L or A, and 5L or B Light Duty V Belts

PART#	O.D.	TYPE	F	L	R	Y	WGT.
2BK32D	3.35	1	1-3/4	1-1/4	7/8	7/8	2.1
2BK34D	3.55	1	1-3/4	1-1/4	7/8	7/8	2.4
2BK36D	3.75	1	1-3/4	1-1/4	7/16	7/8	2.0
2BK40D	3.95	1	1-3/4	1-1/4	7/16	7/8	2.4
2BK45D	4.25	1	1-3/4	1-1/4	7/16	7/8	3.0
2BK47D	4.45	2	1-3/4	1-1/4	7/16	7/8	2.8
2BK50D	4.75	2	1-3/4	1-1/4	7/16	7/8	3.3
2BK52D	4.95	2	1-3/4	1-1/4	7/16	7/8	3.6
2BK55D	5.25	2	1-3/4	1-1/4	7/16	7/8	3.9
2BK57D	5.45	2	1-3/4	1-1/4	7/16	7/8	4.3
2BK60D	5.75	2	1-3/4	1-1/4	7/16	7/8	4.4
2BK62D	5.95	2	1-3/4	1-1/4	7/16	7/8	4.5
2BK65D	6.25	3	1-3/4	1-1/4	7/16	7/8	4.5
2BK67D	6.45	3	1-3/4	1-1/4	7/16	7/8	5.0
2BK70D	6.75	3	1-3/4	1-1/4	7/16	7/8	5.1
2BK80D	7.75	3	1-3/4	1-1/4	7/16	7/8	6.4
2BK90D	8.75	3	1-3/4	1-1/4	7/16	7/8	7.6
2BK100D	9.75	3	1-3/4	1-1/4	7/16	7/8	8.4
2BK110D	10.75	3	1-3/4	1-1/4	7/16	7/8	9.3
2BK120D	11.75	3	1-3/4	1-1/4	7/16	7/8	11.0
2BK130D	12.75	3	1-3/4	1-1/4	7/16	7/8	13.1
2BK140D	13.75	3	1-3/4	1-1/4	7/16	7/8	14.8
2BK160D	15.75	3	1-3/4	1-1/4	7/16	7/8	17.5
2BK190D	18.75	3	1-3/4	1-1/4	7/16	7/8	21.5

Pulleys are cast iron with a black oxide finish and 1 setscrew.
Refer to page 79 for appropriate D Bushing.



Refer to the Moline List Price Book for pricing.