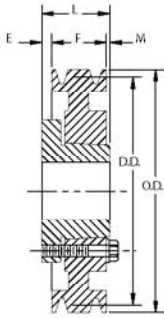


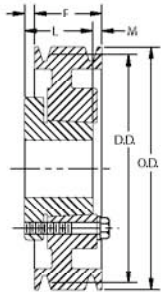
A-B COMBINATION PULLEY - QD STYLE, 1-GROOVE



1-Groove F=7/8, *F=1 3-Groove F=2-1/2
 2-Groove F=1-3/4 4-Groove F=3-1/4

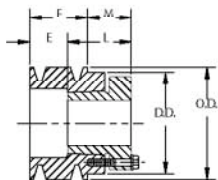


TYPE C



TYPE D

PULLEYS



TYPE F

PART #	Bushing	Bore Range	Type*	D.D.		O.D.	E	L	M	Wt. Less Bushing
				"B" Belts	"A" Belts					
1B34SH	SH	1/2 - 1-5/8	E-1	3.4	3.0	3.75	7/32	1-5/16	21/32	2.0
1B36SH	SH	1/2 - 1-5/8	D-1	3.6	3.2	3.95	19/32	1-5/16	5/32	2.2
1B38SH	SH	1/2 - 1-5/8	D-1	3.8	3.4	4.15	19/32	1-5/16	5/32	2.4
1B40SH	SH	1/2 - 1-5/8	C-1	4.0	3.6	4.35	11/32	1-5/16	3/32	2.7
1B42SH	SH	1/2 - 1-5/8	C-1	4.2	3.8	4.55	11/32	1-5/16	3/32	2.9
1B44SH	SH	1/2 - 1-5/8	C-1	4.4	4.0	4.75	11/32	1-5/16	3/32	3.4
1B46SDS	SDS	1/2 - 2	C-1	4.6	4.2	4.95	11/32	1-5/16	3/32	4.0
1B48SDS	SDS	1/2 - 2	C-1	4.8	4.4	5.15	11/32	1-5/16	3/32	4.3
1B50SDS	SDS	1/2 - 2	C-1	5.0	4.6	5.35	11/32	1-5/16	3/32	4.7
1B52SDS	SDS	1/2 - 2	C-1	5.2	4.8	5.55	11/32	1-5/16	3/32	5.0
1B54SDS	SDS	1/2 - 2	C-1	5.4	5.0	5.75	11/32	1-5/16	3/32	5.3
1B56SDS	SDS	1/2 - 2	C-1	5.6	5.2	5.95	11/32	1-5/16	3/32	5.6
1B58SDS	SDS	1/2 - 2	C-1	5.8	5.4	6.15	11/32	1-5/16	3/32	5.9
1B60SDS	SDS	1/2 - 2	C-1	6.0	5.6	6.35	11/32	1-5/16	3/32	6.2
1B62SDS	SDS	1/2 - 2	C-1	6.2	5.8	6.55	11/32	1-5/16	3/32	6.5
1B64SDS	SDS	1/2 - 2	C-1	6.4	6.0	6.75	11/32	1-5/16	3/32	6.8
1B66SDS	SDS	1/2 - 2	C-1	6.6	6.2	6.95	11/32	1-5/16	3/32	7.2
1B68SDS	SDS	1/2 - 2	C-1	6.8	6.4	7.15	11/32	1-5/16	3/32	7.5
1B70SDS	SDS	1/2 - 2	C-1	7.0	6.6	7.35	11/32	1-5/16	3/32	7.8
1B74SDS	SDS	1/2 - 2	C-2	7.4	7.0	7.75	17/32	1-5/16	7/32	8.8
1B80SDS	SDS	1/2 - 2	C-2	8.0	7.6	8.35	17/32	1-5/16	7/32	9.6
1B86SDS	SDS	1/2 - 2	C-2	8.6	8.2	8.95	17/32	1-5/16	7/32	10.0
1B94SDS	SDS	1/2 - 2	C-2	9.4	9.0	9.75	17/32	1-5/16	7/32	10.5
1B110SDS	SDS	1/2 - 2	D-3	11.0	10.6	11.35	17/32	1-5/16	7/32	11.0
1B124SDS	SDS	1/2 - 2	D-3	12.4	12.0	12.75	17/32	1-5/16	7/32	12.0
1B136SDS	SDS	1/2 - 2	D-3	13.6	13.2	13.95	17/32	1-5/16	7/32	14.0
1B154SK	SK	1/2 - 2-5/8	C-3	15.4	15.0	15.75	21/32	1-15/16	9/32	16.0
1B160SK	SK	1/2 - 2-5/8	C-3	16.0	15.6	16.35	21/32	1-15/16	9/32	16.6
1B184SK	SK	1/2 - 2-5/8	C-3	18.4	18.0	18.75	21/32	1-15/16	9/32	18.0

Pulleys are cast iron with a black oxide finish and 1 setscrew.

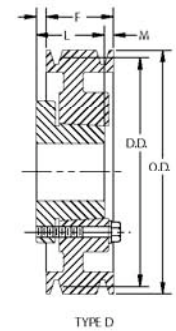
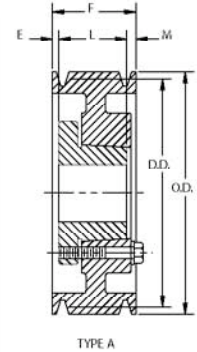
*1=Solid Construction; 2=Web Construction; 3=Arm Construction

Refer to the Moline List Price Book for pricing.

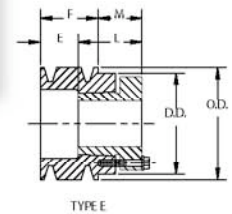
Call 630-584-4600 or 800-242-4633 Fax 630-584-1999 www.molinebearing.com sales@molinebearing.com
 Moline Bearing Company P.O. Box 509 St. Charles, IL 60174

1-Groove F=7/8, *F=1 3-Groove F=2-1/2
2-Groove F=1-3/4 4-Groove F=3-1/4

PART #	Bushing	Bore Range	Type*	D.D.		O.D.	E	L	M	Wt. Less Bushing
				"B" Belts	"A" Belts					
2B34SH	SH	1/2 - 1-5/8	E-1	3.4	3.0	3.75	1-3/32	1-5/16	21/32	3.2
2B36SH	SH	1/2 - 1-5/8	D-1	3.6	3.2	3.95	15/32	1-5/16	29/32	3.4
2B38SH	SH	1/2 - 1-5/8	D-1	3.8	3.4	4.15	15/32	1-5/16	29/32	3.9
2B40SH	SH	1/2 - 1-5/8	A-1	4.0	3.6	4.35	1/32	1-5/16	13/32	4.1
2B42SH	SH	1/2 - 1-5/8	A-1	4.2	3.8	4.55	1/32	1-5/16	13/32	4.4
2B44SH	SH	1/2 - 1-5/8	A-1	4.4	4.0	4.75	1/32	1-5/16	13/32	4.6
2B46SDS	SDS	1/2 - 2	A-1	4.6	4.2	4.95	1/32	1-5/16	13/32	5.0
2B48SDS	SDS	1/2 - 2	A-1	4.8	4.4	5.15	1/32	1-5/16	13/32	5.4
2B50SDS	SDS	1/2 - 2	A-1	5.0	4.6	5.35	1/32	1-5/16	13/32	6.0
2B52SDS	SDS	1/2 - 2	A-1	5.2	4.8	5.55	1/32	1-5/16	13/32	6.3
2B54SDS	SDS	1/2 - 2	A-1	5.4	5.0	5.75	1/32	1-5/16	13/32	6.6
2B56SDS	SDS	1/2 - 2	A-2	5.6	5.2	5.95	1/32	1-5/16	13/32	6.9
2B58SDS	SDS	1/2 - 2	A-2	5.8	5.4	6.15	1/32	1-5/16	13/32	7.2
2B60SDS	SDS	1/2 - 2	A-2	6.0	5.6	6.35	1/32	1-5/16	13/32	7.5
2B62SDS	SDS	1/2 - 2	A-2	6.2	5.8	6.55	1/32	1-5/16	13/32	7.8
2B64SDS	SDS	1/2 - 2	A-2	6.4	6.0	6.75	1/32	1-5/16	13/32	8.2
2B66SDS	SDS	1/2 - 2	A-2	6.6	6.2	6.95	1/32	1-5/16	13/32	8.6
2B68SDS	SDS	1/2 - 2	A-3	6.8	6.4	7.15	1/32	1-5/16	13/32	9.0
2B70SK	SK	1/2 - 2-5/8	D-1	7.0	6.6	7.35	11/32	1-15/16	5/32	9.3
2B74SK	SK	1/2 - 2-5/8	D-2	7.4	7.0	7.75	11/32	1-15/16	5/32	10.6
2B80SK	SK	1/2 - 2-5/8	D-3	8.0	7.6	8.35	11/32	1-15/16	5/32	11.0
2B86SK	SK	1/2 - 2-5/8	D-3	8.6	8.2	8.95	11/32	1-15/16	5/32	11.6
2B94SK	SK	1/2 - 2-5/8	D-3	9.4	9.0	9.75	11/32	1-15/16	5/32	13.0
2B110SK	SK	1/2 - 2-5/8	D-3	11.0	10.6	11.35	11/32	1-15/16	5/32	14.0
2B124SK	SK	1/2 - 2-5/8	D-3	12.4	12.0	12.75	11/32	1-15/16	5/32	18.0
2B136SK	SK	1/2 - 2-5/8	D-3	13.6	13.2	13.95	11/32	1-15/16	5/32	20.0
2B154SK	SK	1/2 - 2-5/8	D-3	15.4	15.0	15.75	11/32	1-15/16	5/32	23.0
2B160SK	SK	1/2 - 2-5/8	D-3	16.0	15.6	16.35	11/32	1-15/16	5/32	24.0
2B184SK	SK	1/2 - 2-5/8	D-3	18.4	18.0	18.75	11/32	1-15/16	5/32	29.0
2B200SF	SF	1/2 - 2-15/16	D-3	20.0	19.6	20.35	15/32	2-1/16	5/32	33.0



PULLEYS

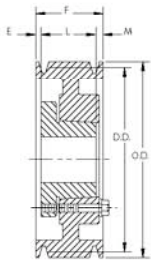


Pulleys are cast iron with a black oxide finish and 1 setscrew.

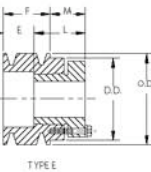
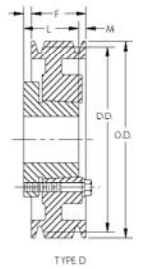
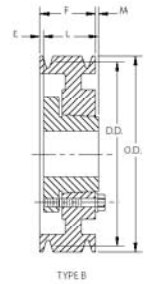
*1=Solid Construction; 2=Web Construction; 3=Arm Construction

Refer to the Moline List Price Book for pricing.

A-B COMBINATION PULLEY - QD STYLE, 3-GROOVE



1-Groove F=7/8, *F=1 3-Groove F=2-1/2
 2-Groove F=1-3/4 4-Groove F=3-1/4



PART #	Bushing	Bore Range	Type *	D.D.		O.D.	E	L	M	Wt. Less Bushing
				"B" Belts	"A" Belts					
3B34SH	SH	1/2 - 1-5/8	E-1	3.4	3.0	3.75	1-27/32	1-5/16	21/32	4.4
3B36SH	SH	1/2 - 1-5/8	D-1	3.6	3.2	3.95	15/32	1-5/16	1-21/32	4.7
3B38SH	SH	1/2 - 1-5/8	D-1	3.8	3.4	4.15	15/32	1-5/16	1-21/32	5.3
3B40SH	SH	1/2 - 1-5/8	D-1	4.0	3.6	4.35	15/32	1-5/16	1-21/32	5.6
3B42SH	SH	1/2 - 1-5/8	D-1	4.2	3.8	4.55	15/32	1-5/16	1-21/32	5.9
3B44SH	SH	1/2 - 1-5/8	D-1	4.4	4.0	4.75	15/32	1-5/16	1-21/32	6.3
3B46SD	SD	1/2 - 2	A-1	4.6	4.2	4.95	13/32	1-13/16	9/32	6.7
3B48SD	SD	1/2 - 2	A-1	4.8	4.4	5.15	13/32	1-13/16	9/32	7.1
3B50SD	SD	1/2 - 2	A-1	5.0	4.6	5.35	13/32	1-13/16	9/32	7.4
3B52SD	SD	1/2 - 2	A-1	5.2	4.8	5.55	13/32	1-13/16	9/32	7.8
3B54SD	SD	1/2 - 2	A-1	5.4	5.0	5.75	13/32	1-13/16	9/32	8.2
3B56SD	SD	1/2 - 2	A-1	5.6	5.2	5.95	13/32	1-13/16	9/32	8.5
3B58SD	SD	1/2 - 2	A-1	5.8	5.4	6.15	13/32	1-13/16	9/32	8.8
3B60SD	SD	1/2 - 2	A-1	6.0	5.6	6.35	13/32	1-13/16	9/32	9.1
3B62SD	SD	1/2 - 2	A-1	6.2	5.8	6.55	13/32	1-13/16	9/32	9.4
3B64SD	SD	1/2 - 2	A-1	6.4	6.0	6.75	13/32	1-13/16	9/32	9.7
3B66SD	SD	1/2 - 2	A-1	6.6	6.2	6.95	13/32	1-13/16	9/32	10.0
3B68SD	SD	1/2 - 2	B-3	6.8	6.4	7.15	13/32	1-13/16	9/32	10.5
3B70SK	SK	1/2 - 2-5/8	D-1	7.0	6.6	7.35	3/32	1-15/16	21/32	11.0
3B74SK	SK	1/2 - 2-5/8	D-2	7.4	7.0	7.75	3/32	1-15/16	21/32	12.0
3B80SK	SK	1/2 - 2-5/8	D-3	8.0	7.6	8.35	3/32	1-15/16	21/32	12.5
3B86SK	SK	1/2 - 2-5/8	D-3	8.6	8.2	8.95	3/32	1-15/16	21/32	13.0
3B94SK	SK	1/2 - 2-5/8	D-3	9.4	9.0	9.75	3/32	1-15/16	21/32	16.0
3B110SK	SK	1/2 - 2-5/8	D-3	11.0	10.6	11.35	3/32	1-15/16	21/32	19.0
3B124SK	SK	1/2 - 2-5/8	D-3	12.4	12.0	12.75	3/32	1-15/16	21/32	24.0
3B136SK	SK	1/2 - 2-5/8	D-3	13.6	13.2	13.95	3/32	1-15/16	21/32	27.0
3B154SK	SK	1/2 - 2-5/8	D-3	15.4	15.0	15.75	3/32	1-15/16	21/32	30.0
3B160SK	SK	1/2 - 2-5/8	D-3	16.0	15.6	16.35	3/32	1-15/16	21/32	33.0
3B184SK	SK	1/2 - 2-5/8	D-3	18.4	18.0	18.75	3/32	1-15/16	21/32	38.0
3B250SF	SF	1/2 - 2-15/16	D-3	25.0	24.6	25.35	7/32	2-1/16	21/32	54.0

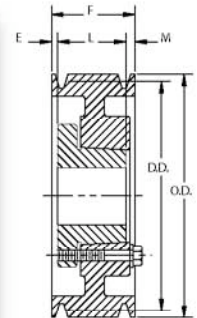
Pulleys are cast iron with a black oxide finish and 1 setscrew.
 * 1=Solid Construction; 2=Web Construction; 3=Arm Construction

Refer to the Moline List Price Book for pricing.

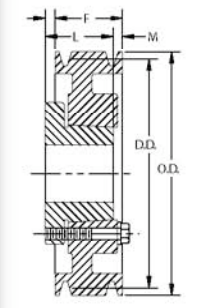
Call 630-584-4600 or 800-242-4633 Fax 630-584-1999 www.molinebearing.com sales@molinebearing.com
 Moline Bearing Company P.O. Box 509 St. Charles, IL 60174

1-Groove F=7/8, *F=1 3-Groove F=2-1/2
 2-Groove F=1-3/4 4-Groove F=3-1/4

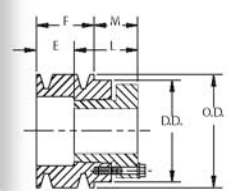
PART #	Bushing	Bore Range	Type*	D.D.		O.D.	E	L	M	Wt. Less Bushing
				"B" Belts	"A" Belts					
4B34SD	SD	1/2 - 2	E-1	3.4	3.0	3.75	2-15/32	1-13/16	1-1/32	5.5
4B36SD	SD	1/2 - 2	E-1	3.6	3.2	3.95	2-15/32	1-13/16	1-1/32	5.8
4B38SD	SD	1/2 - 2	E-1	3.8	3.4	4.15	2-15/32	1-13/16	1-1/32	6.2
4B40SD	SD	1/2 - 2	E-1	4.0	3.6	4.35	2-3/32	1-13/16	21/32	6.6
4B42SD	SD	1/2 - 2	E-1	4.2	3.8	4.55	2-3/32	1-13/16	21/32	6.9
4B44SD	SD	1/2 - 2	E-1	4.4	4.0	4.75	2-3/32	1-13/16	21/32	7.2
4B46SD	SD	1/2 - 2	A-1	4.6	4.2	4.95	21/32	1-13/16	25/32	7.6
4B48SD	SD	1/2 - 2	A-1	4.8	4.4	5.15	21/32	1-13/16	25/32	8.0
4B50SD	SD	1/2 - 2	A-1	5.0	4.6	5.35	21/32	1-13/16	25/32	8.4
4B52SD	SD	1/2 - 2	A-1	5.2	4.8	5.55	21/32	1-13/16	25/32	8.8
4B54SD	SD	1/2 - 2	A-1	5.4	5.4	5.75	21/32	1-13/16	25/32	9.2
4B56SD	SD	1/2 - 2	A-1	5.6	5.2	5.95	21/32	1-13/16	25/32	9.6
4B58SD	SD	1/2 - 2	A-1	5.8	5.4	6.15	21/32	1-13/16	25/32	10.0
4B60SD	SD	1/2 - 2	A-1	6.0	5.6	6.35	21/32	1-13/16	25/32	10.4
4B62SD	SD	1/2 - 2	A-1	6.2	5.8	6.55	21/32	1-13/16	25/32	10.8
4B64SD	SD	1/2 - 2	A-1	6.4	6.0	6.75	21/32	1-13/16	25/32	12.0
4B66SD	SD	1/2 - 2	A-1	6.6	6.2	6.95	21/32	1-13/16	25/32	12.4
4B68SD	SD	1/2 - 2	A-1	6.8	6.4	7.15	21/32	1-13/16	25/32	13.0
4B70SK	SK	1/2 - 2-5/8	A-1	7.0	6.6	7.35	7/32	1-15/16	1-3/32	13.5
4B74SK	SK	1/2 - 2-5/8	A-3	7.4	7.0	7.75	7/32	1-15/16	1-3/32	14.0
4B80SK	SK	1/2 - 2-5/8	A-3	8.0	7.6	8.35	7/32	1-15/16	1-3/32	15.5
4B86SK	SK	1/2 - 2-5/8	A-3	8.6	8.2	8.95	7/32	1-15/16	1-3/32	17.0
4B94SK	SK	1/2 - 2-5/8	A-3	9.4	9.0	9.75	7/32	1-15/16	1-3/32	19.0
4B110SK	SK	1/2 - 2-5/8	A-3	11.0	10.6	11.35	7/32	1-15/16	1-3/32	22.0
4B124SK	SK	1/2 - 2-5/8	A-3	12.4	12.0	12.75	7/32	1-15/16	1-3/32	29.0
4B136SK	SK	1/2 - 2-5/8	A-3	13.6	13.2	13.95	7/32	1-15/16	1-3/32	34.0
4B154SF	SF	1/2 - 2-15/16	A-3	15.4	15.0	15.75	5/32	2-1/16	1-1/32	39.0
4B160SF	SF	1/2 - 2-15/16	A-3	16.0	15.6	16.35	5/32	2-1/16	1-1/32	42.0
4B184SF	SF	1/2 - 2-15/16	A-3	18.4	18.0	18.75	5/32	2-1/16	1-1/32	47.0
4B200SF	SF	1/2 - 2-15/16	A-3	20.0	19.6	20.35	5/32	2-1/16	1-1/32	51.0
4B250E	E	7/8 - 3-1/2	D-3	25.0	24.6	25.35	5/32	2-3/4	21/32	73.0



TYPE A



TYPE D



TYPE E

Pulleys are cast iron with a black oxide finish and 1 setscrew.
 *1=Solid Construction; 2=Web Construction; 3=Arm Construction

Refer to the Moline List Price Book for pricing.